



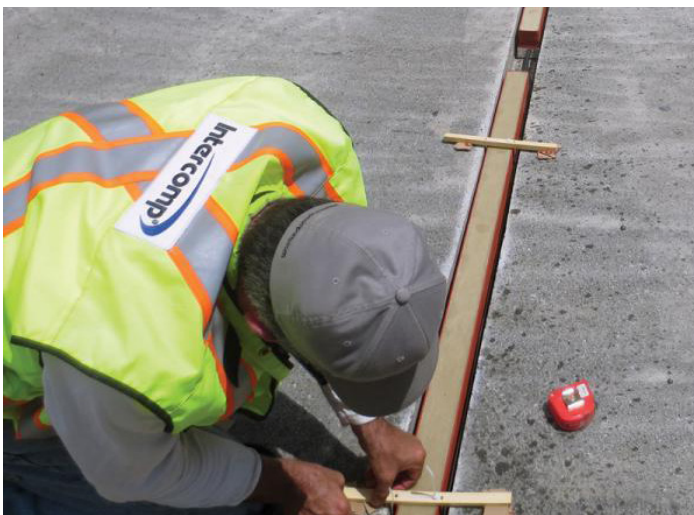
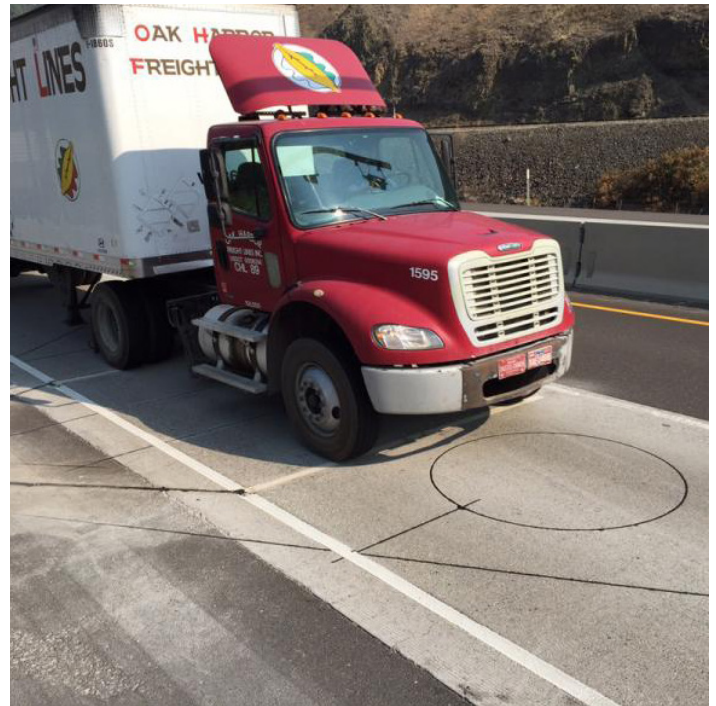
Intercomp WIM Strip Sensors

Weigh-In-Motion strip sensors combine accuracy and longevity in a minimally invasive design for high volume weight enforcement and data collection.

Intercomp WIM Strip Sensors

Weigh-In-Motion Strip Sensors offer a unique alternative to traditional WIM scales. Intercomp strip sensors use strain gauge based technology which is utilized in the most accurate vehicle scales. This technology takes full advantage of the fast response times and large sampling rates to achieve long term accuracy and stability. As with traditional WIM sensors, Intercomp strip sensors are installed into just 3" (75mm) channels in the roadway minimizing required time for installation and maintenance.

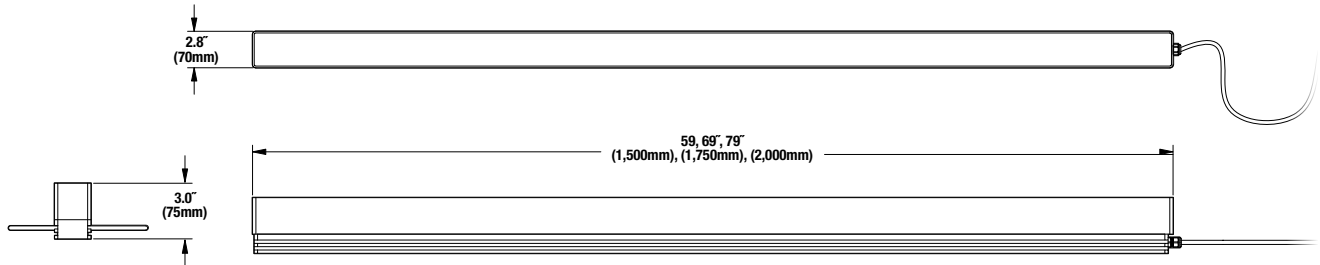
WIM Strip Sensors can be configured in sets of 1, 2 or 3 pairs of strips depending on the application and required accuracy. When combined with cameras, detectors and data transmission devices, they are capable of serving as part of stand-alone virtual remote weigh stations. The sensors can also be configured to work in tandem with commercial weigh stations as a screening device enabling enforcement to focus efforts on the most probable offenders.



Intercomp WIM Strip Sensors

Weigh-In-Motion Strip Sensors

Intercomp's Strip Sensors utilize strain gauge technology which is widely accepted as the most accurate and reliable means to weigh a vehicle. This revolutionary Weigh-In-Motion strain gauge based design provides an alternative to traditional sensor based technology. Intercomp Strip Sensors are capable of meeting or exceeding ASTM E1318-09 Type I, Type II, Type III and COST 323 A(5), B+(7) or B(10) performance requirements. Installed within 3" (75mm) wide channels in the pavement, the sensor delivers lower cost because of the minimal time & labor associated with installation and maintenance.



Specifications			
Length	59in (1.50m)	69in (1.75m)	79in (2.00m)
Weight (Not Including Cable)	50lbs (22kg)	62lbs (28kg)	71lbs (35kg)
Sensor Width	2.80in (70mm)		
Sensor Height	3.0in (75mm)		
Vehicle Speed Range	Up to 80mph (130km/hr)		
Operating Temperature Range	-40° to 175°F (-40° to 80°C)		
Cable Type	6 Conductor Cable with Shield, ± Excitation, ± Signal, ± Sens		
Cable Length	131ft (40m) or 328ft (100m) – Custom Lengths Available per Customer Request		
Recommended Excitation	5-10V		
IP Rating	IP68		

Intercomp ASTM & COST Requirements						
Description	ASTM 1318 Type III	ASTM 1318 Type II	ASTM 1318 Type I	COST 323 A(5)	COST 323 B+(7)	COST 323 B(10)
Speed (if applicable)	10-80mph (16-130km/h)	15-80mph (24-130km/h)	10-80mph (16-130km/h)	Not Required	Not Required	Not Required
Gross-Vehicle Weight	± 6%	±15%	±10%	5%	7%	10%
Axle-Group Load	±10%	±20%	±15%	7%	10%	13%
Single Axle	±15%	±30%	±20%	8%	11%	15%

***NOTE: System accuracy is dependent upon installation and site construction in accordance with Intercomp methods and site requirements.**

